



CLASS C DIESEL
2025 VERONA

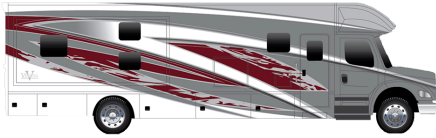
Version 2025.1 • Current as of 9/12/2024
All Features Are Subject To Change Without Notice Or Obligation

MOTORHOME LUXURY TAILORED TO YOUR JOURNEY

The 2025 Verona from Renegade RV is a Class C diesel that combines travel-friendly performance and luxury into every detail. Beautiful hardwood cabinets, polished solid surface countertops, stainless steel appliances and comfortable furniture are just a few of the features throughout the Verona. With ample interior and exterior storage, as well as comfortable interiors, the Verona makes traveling the road a breeze.

LENGTH	TOWING CAPACITY	BATHROOMS
36' 8"-39' 10"	20,000 lbs	1-1.5

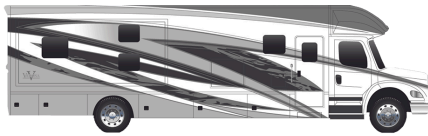
EXTERIOR PAINT OPTIONS



FLARE



KINETIC



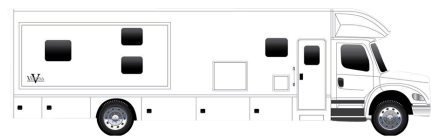
PROPULSION



SURGE

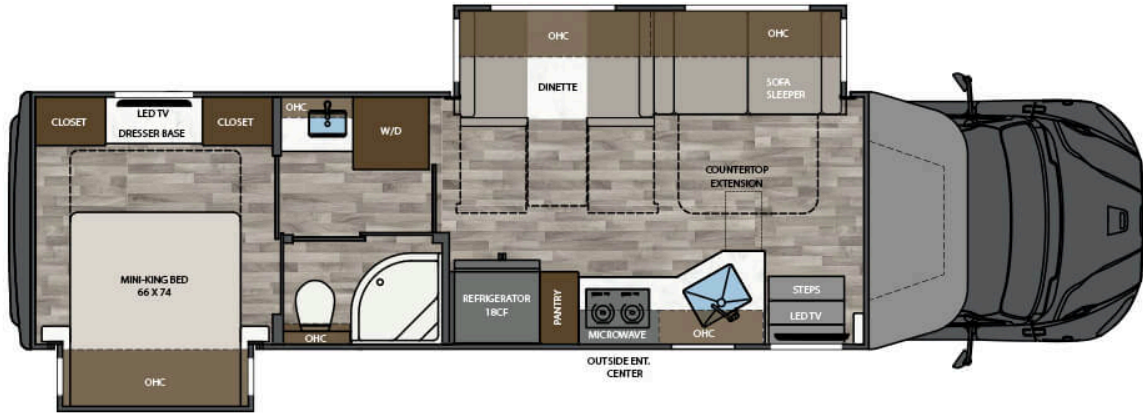


POLARIS

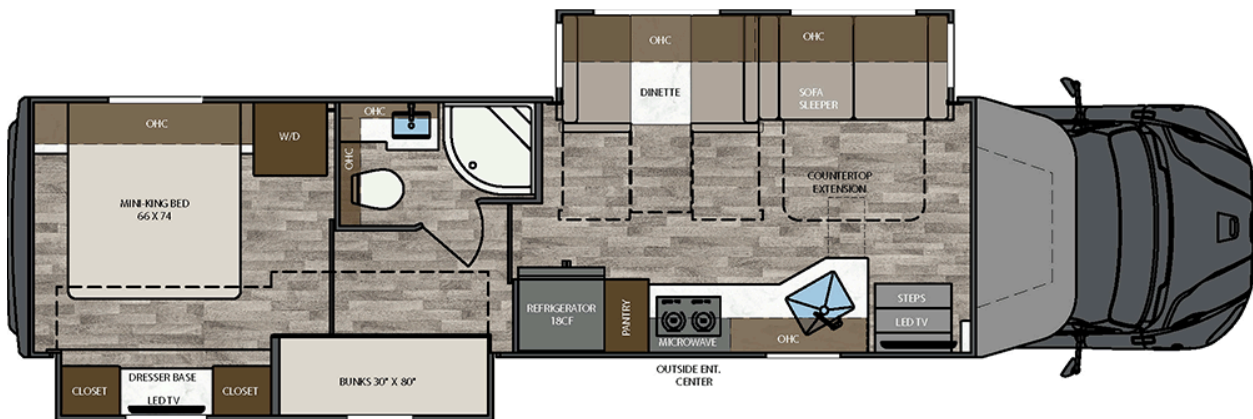


TUNDRA

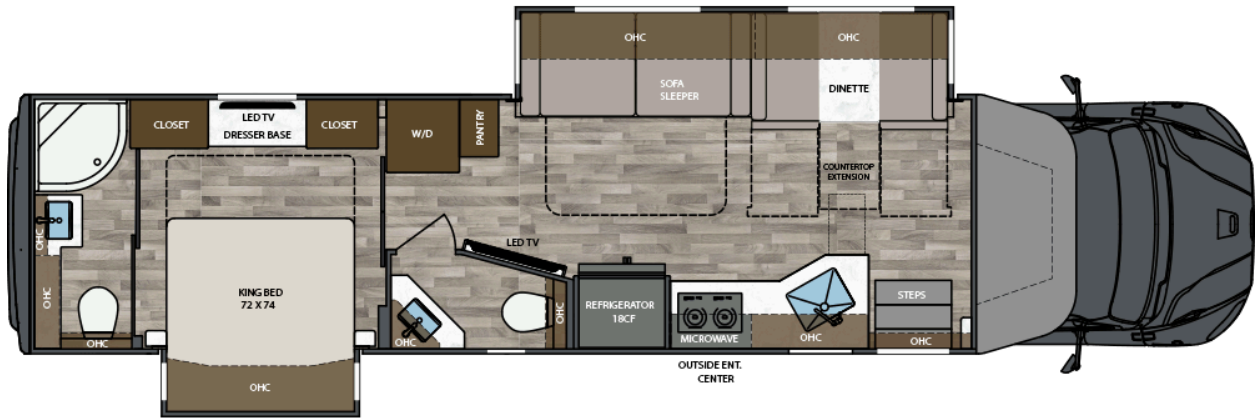
AVAILABLE FLOORPLANS



36VSB



40VBH



40VRB



40VTS

INTERIOR DETAILS



Cape Cod Cabinetry // Athens Interior Décor // The 2025 Verona features high-grade LVP flooring, solid surface countertops and ultra soft touch vinyl furniture upholstery.



Cape Cod Cabinetry // Athens Interior Décor // Enjoy your meals with a great view!



Cape Cod Cabinetry // Athens Interior Décor // You'll have room for all of your cooking supplies in these beautiful hardwood cabinets.



Cape Cod Cabinetry // Athens Interior Décor // The bedroom in the 2025 Verona includes a large wardrobe and overhead cabinet space giving you plenty of storage.



Cape Cod Cabinetry // Athens Interior Décor // The bathroom is both aesthetically pleasing and functional.



Cape Cod Cabinetry // Athens Interior Décor // Navigate to your next great adventure in soft-touch driver and passenger seats with armrests - talk about a comfortable ride!



Cape Cod Cabinetry // Athens Interior Décor // The bunk beds have their very own outlet. Set those kids up with their tablet, a charger and enjoy some peace and quiet!



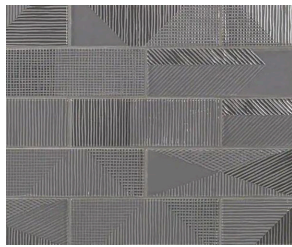
Cape Cod Cabinetry // Athens Interior Décor // The bunk beds make the 2025 Verona a great RV for families!



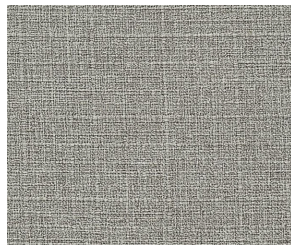
Cape Cod Cabinetry // Athens Interior Décor // Create amazing memories in this luxurious and spacious Class C motorhome.



Athens Décor



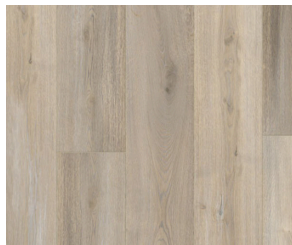
Backsplash



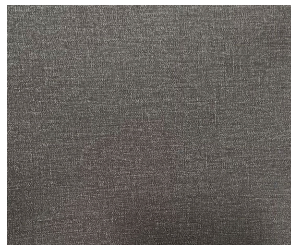
Beadspread



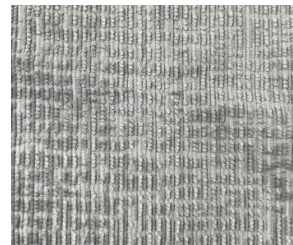
Countertop



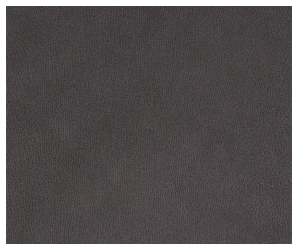
Flooring



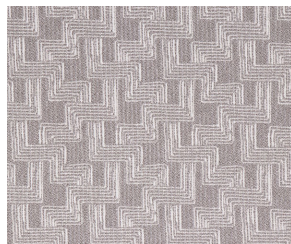
Furniture



Sofa Pillows



Valance Accent



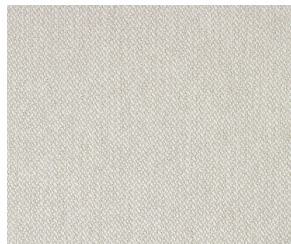
Valance



Cyprus Décor



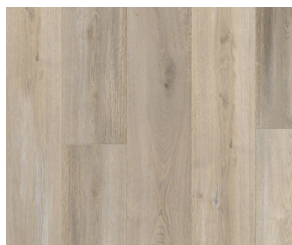
Backsplash



Bedsread



Countertop



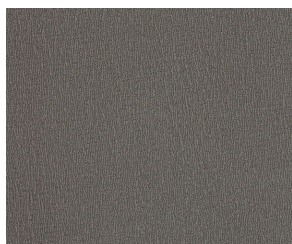
Flooring



Furniture



Sofa Pillows



Valance Accent



Valance



Tuscany Décor



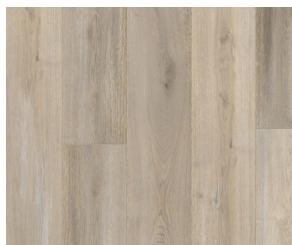
Backsplash



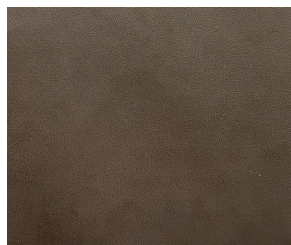
Bedsread



Countertop



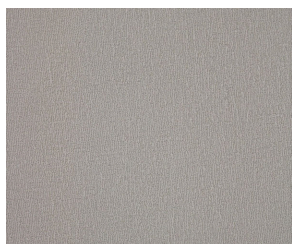
Flooring



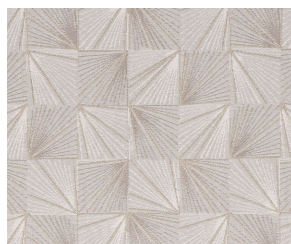
Furniture



Sofa Pillows



Valance Accent



Valance



Solid Wood Cabinetry Options



Cape Cod



Lakewood

BUILT BY THE BOLD, FOR THE BOLD

We became one of the world's top motorhome brands by building extraordinary coaches. We remain the industry rebels by continuously challenging the status quo in terms of quality, value, power, versatility, durability and style. Starting with the best chassis, and ending with a motorhome that outperforms and outlasts - Renegade RVs are designed for extreme luxury and extreme adventure. Renegade RVs are built for you.

STANDARDS & OPTIONS

CHASSIS AND CAB

- Freightliner® M2-106 Plus
 - Cummins® L9 Engine with 360HP, 1150 lb. ft. Torque
 - 37,600 lbs GVWR
 - Allison® 3200TRV Electronic 6-Speed Transmission
 - 20,000 lbs Towing Capacity
 - Dual 50-Gallon Aluminum Fuel Tanks (100-Gallon Total Capacity)
 - 6-Gallon DEF Tank
 - 4-Wheel Disc Brakes
 - Polished Aluminum Wheels with Center Caps
 - Airliner® Rear Air Suspension
 - Auto Drain Valve for Air Brake Reservoirs
 - Garmin® Touch Screen, Bluetooth, GPS, RV Maps, and Color Camera Monitor
 - Rear and Side View Cameras
 - Upgraded Cab Sound System
 - JBL® 5.25" Dash
 - 6.25" Ceiling Speakers
 - Premium Freightliner® Sound and Thermal Insulation Package
 - LED Headlight Assemblies
 - Power Windows and Door Locks
 - Power/Heated Remote-Control Mirrors
 - Air Ride Driver and Passenger Seat Pedestals with Swivels
 - Soft Touch Driver/Passenger Seats with Armrests
 - Full Cab Mat
 - Auxiliary Air Chuck and Hose
 - Freightliner® Safety Assurance Package:
 - Lane Guidance
 - Electronic Stability Control
 - Collision Mitigation
-

EXTERIOR FEATURES

- Aerodynamic Fiberglass Front and Rear Caps, Transition, and Cab Steps
 - Four-Point Hydraulic Leveling System with App
 - Exterior Entry Door Assist Handle
 - Powered Folding Double Entry Steps
 - (6) Colorway Paint Options
 - Girard® GG Lateral Arm Electric Awning with LED Lights
 - Slide Toppers with Covers
 - Frameless Dual-Pane Tinted Windows with Screens
 - Side-Swing Aluminum Compartment Doors with Single Handle Paddle Latches and Double Catch
 - Steel Storage Compartments with Carpeted Lining
 - Diamond Shield® Nano-Fusion™ Paint Protection (Front Mask)
-

CONSTRUCTION

- 2" Vacuum Bond Laminated Sidewalls with Welded Aluminum Framing
 - Welded Aluminum Roof Truss System with Framed Cutouts
 - One-Piece Crowned Fiberglass Roof Surface
 - "Super Sandwich" Floor Construction with Composite Underbelly Includes:
 - 2" Welded Steel Floor Joist System Mounted to 3" Steel Longitudinal Floor Beams
 - 3/4" Fir Plywood Deck Over 2 x 4 Wood-Framed Residential Floor with Thermal and Sound-Deadening Insulation
-

PLUMBING SYSTEMS

- 150 Gallon Fresh Water Tank
 - 75 Gallon Gray Tank
 - 75 Gallon Black Tank
 - See-Level® Tank Monitoring System
 - Full Maintenance Wet Bay
 - Black Tank Flush System
 - Fresh Water Fill - City Water Hookup
 - Outside Faucet with Sprayer
 - On-Demand Water Pump
 - Whole House Water Filtration System
-

INTERIOR FEATURES

- (3) Interior Décor Options
 - Décor Coordinating Fabric Valances
 - Double Roller Day/Night Shades (Manual)
 - Decorative Wallboard with Coordinating Accent in Slideouts
 - High-Grade LVP Flooring Throughout
 - Maple Hardwood Cabinetry
 - 2-Wood Stain Color Options
 - Dovetail Drawers on Soft Closing Slides
 - Framed Doors on Hidden Hinges
 - Pantry
 - Hardwood Side Fascia
 - Satin Nickel Door Hardware
 - Satin Nickel Kitchen Faucet
 - Solid Surface Countertops Throughout
 - Rectangular Single Bowl Undermount Kitchen Sink with Cover
 - Grouted Tile Backsplash
 - Butcher Block Countertop Extension
 - LED Dimmable Lighting
 - Memory Foam Mattress
 - Ultra Soft Touch Vinyl Furniture Upholstery
 - Convertible Booth Dinette with Storage
 - Sofa Sleeper, Tri-Fold
 - Aerocap with Storage Cabinet
-

BATH

- Maple Hardwood Vanity, Medicine, and Linen Storage Cabinets
 - LED Vanity Light
 - Deluxe Satin Nickel Bath Faucet and Adjustable Showerhead
 - Satin Nickel Towel Bar, Towel Ring, and Toilet Paper Holder
 - Porcelain Macerator Toilet with Push Button Flush
 - Solid Surface Countertop with Integrated Sink
 - Wavy Patterned Fiberglass Shower with Glass Door
 - Skylight Over Shower
-

APPLIANCES

- 18 cu. ft. French Door Residential Refrigerator with Stainless-Steel Doors
 - Recessed 2-Burner Induction Cooktop with Polished Solid Surface Covers
 - 1.7 cu. ft. Stainless-Steel Convection Microwave Oven
 - Aqua-Hot® 250D Hydronic Water and Zone Heating System
 - (2) 15,000 BTU Roof A/C with Heat Pumps and Plumbed Condensation Lines
 - Ducted Air Conditioning
 - MaxxAir® Power Vents
 - Pre-Wired and Plumbed for Optional Washer/Dryer
 - Carbon Monoxide, LP and Smoke Detectors, and Fire Extinguisher
-

ELECTRICAL SYSTEMS

- 8KW Onan® Quiet Diesel Generator
 - Automatic Generator Start System
 - 50-Amp Electrical Panel
 - 3,000w True Sine Wave Inverter
 - Transfer Switch with Surge Protection
 - 330AH AGM House Battery
 - Solar Charging System Pre-Wire
 - Multiplex Control System with Bluetooth App Control
 - USB/USB-C Charging in Living Area, Bedroom, Kitchen, and Bunk Areas
 - 50-Amp Power Retractable Shore Cord Reel
 - 12V Holding Tank Heaters, Gray and Black Tanks
-

ENTERTAINMENT SYSTEMS

- 43” 4K Smart LED TV in Living Area, Mounted on Articulating Swing Arm
 - Soundbar Home Theater with Bluetooth Streaming and Wireless Subwoofer in Living Area
 - 32” 4K Smart LED TV in the Bedroom
 - Exterior Entertainment Center
 - 32” Smart LED TV on Swivel
 - Soundbar with Bluetooth Streaming
 - USB Charging
 - Winegard® Connect 2.0 Rooftop OTA Antenna with Wi-Fi and 4G Ready (SIM Card Req.)
 - Prewire for Winegard® Trav’ler Stationary HD Satellite System
-

POPULAR OPTIONS

- **Powered Reclining Theater Seat ILO Standard Sofa**
 - **Cabover Bunk with Window, Power Shade, and 24" Smart LED TV**
 - **Wingard® In-Motion Satellite System**
 - **Wingard® HD Satellite Trav'ler Pro**
 - **600W Solar Panel System (3 at 200W)**
 - **(3) 100AH Lithium Batteries ILO AGM Batteries**
 - **American Racing Wheels® Upgrade**
 - **Caliber 9® Grille Package (Available in Chrome or Black)**
 - **Full-Width Rock Guard Mud Flap**
 - **Washer and Dryer Stack**
-

	36VSB	40VRB 40VBH 40VTS
Overall Length	36' 8"	39' 10"
Exterior Width	99.25"	99.25"
Wheelbase	285"	309"
Overall Exterior Height (Includes 15,000 BTU Roof Air Conditioners)	12' 10"	12' 10"
Interior Height	84"	84"
Fuel Capacity	100 Gallons	100 Gallons
Fresh Water	150 Gallons	150 Gallons
Gray Water	75 Gallons	75 Gallons
Black Water	75 Gallons	75 Gallons

THE RENEGADE RV WARRANTY

New Renegade motorhomes are covered by a 1-year unlimited miles limited warranty, plus a 3-year 36,000-mile limited structural warranty.

All Renegade motorhome chassis, engines and transmissions, and drivetrain warranties are provided and administered by their respective manufacturers.

For specific information about these warranties, [ask your dealer](#) or [contact Renegade RV](#).

