



SUPER C DIESEL
2025 EXPLORER

Version 2025.2 • Current as of 9/23/2024
All Features Are Subject To Change Without Notice Or Obligation

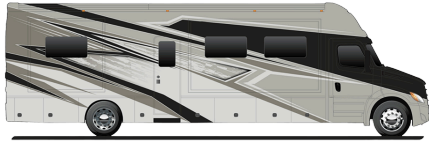
MORE ADVANCED THAN EVER

Elevated craftsmanship and innovative design unite to create Renegade RV's 2025 Explorer, a Class C diesel RV. The Explorer features an Allison transmission and a 525-HP engine. Whatever adventure lies ahead, the Explorer will give you the driving power you need to get you to your destination safely and comfortably.

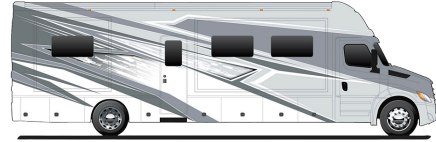
The Explorer's interior is beautifully designed to include tile floors, hardwood residential-style cabinets, kitchen and bathroom tile backsplashes.

LENGTH	TOWING CAPACITY	BATHROOMS
38' 5"-40' 6"	20,000 lbs	1-1.5

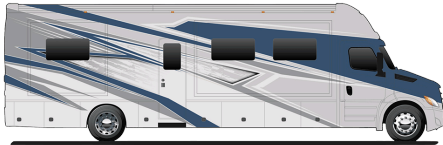
EXTERIOR PAINT OPTIONS



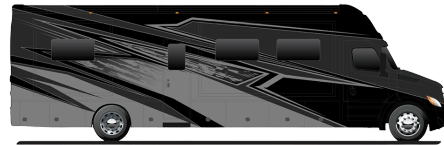
ELEVATION



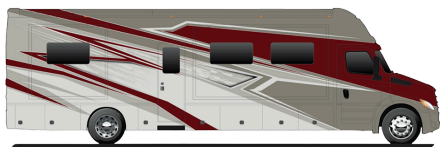
HEMISPHERE



NAUTICA



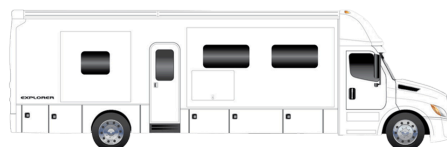
NIGHTFALL



POLE STAR

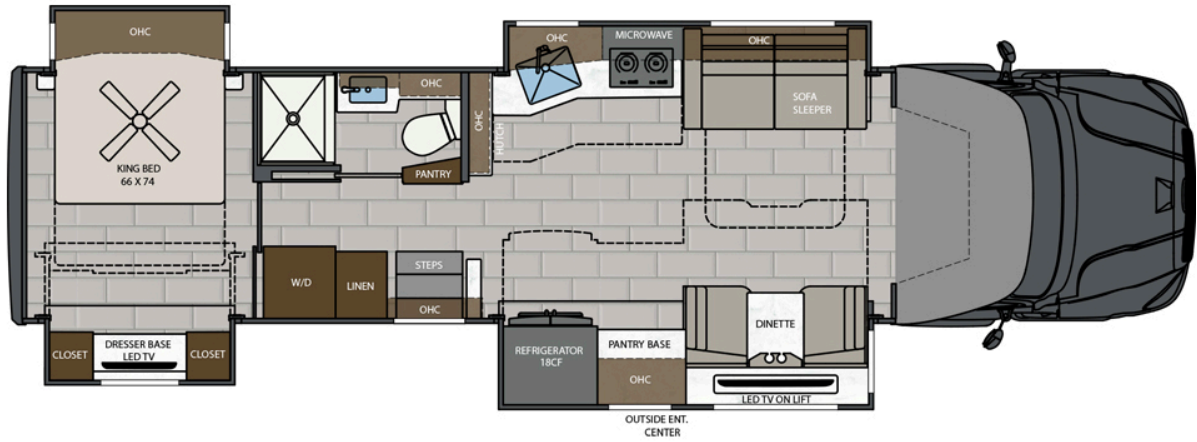


POLARIS

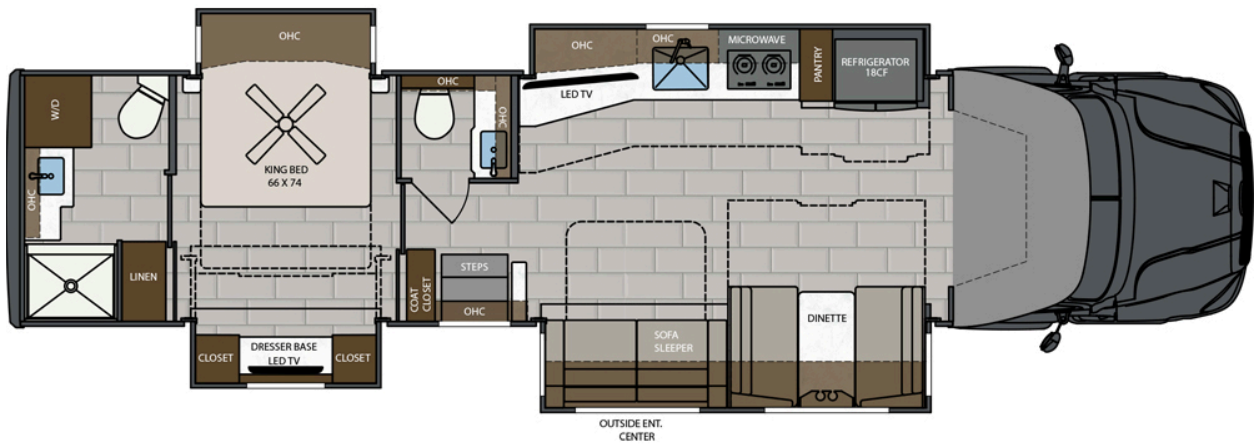


TUNDRA

AVAILABLE FLOORPLANS



38EMB



40ERB

INTERIOR DETAILS



Rockport Cabinetry // Denali Interior Décor // The 2025 Explorer has beautiful tile floors and hardwood residential-style cabinetry.



Rockport Cabinetry // Denali Interior Décor // The ultra-soft touch vinyl furniture upholstery gives a whole new meaning to on-the-road luxury.



Rockport Cabinetry // Denali Interior Décor // The kitchen comes with a stainless steel convection microwave oven and a recessed 2-burner electric induction cooktop.



Rockport Cabinetry // Denali Interior Décor // Get a good night's rest in this cozy bedroom wherever your adventures take you.



Rockport Cabinetry // Denali Interior Décor // The bathroom features a sleek vanity and a shower maximizing convenience on the road.



Rockport Cabinetry // Denali Interior Décor // Create unforgettable memories in the spacious and comfortable living area.



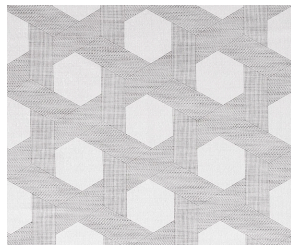
Rockport Cabinetry // Denali Interior Décor // The storage in the bedroom gives you plenty of space for all your clothes.



Denali Décor



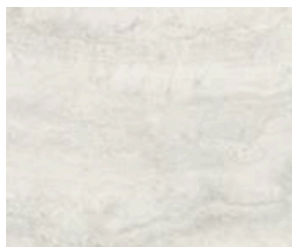
Backsplash



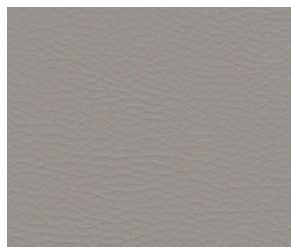
Bedsread



Countertop



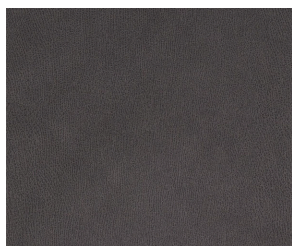
Flooring



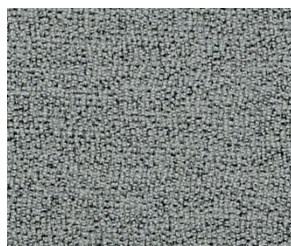
Furniture



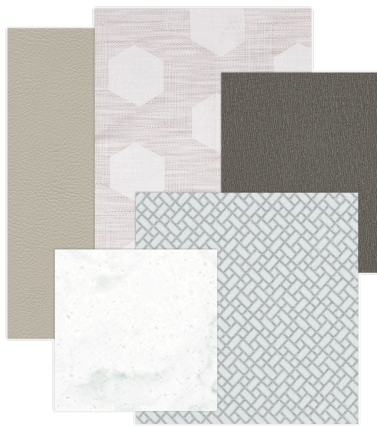
Sofa Pillows



Valance Accent



Valance



Everest Décor



Backsplash



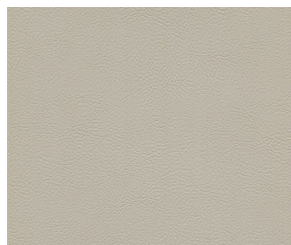
Bedspread



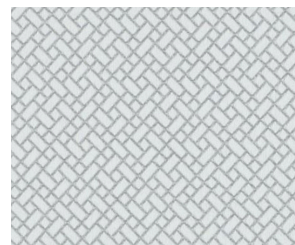
Countertop



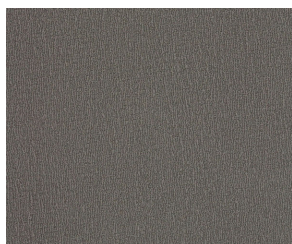
Flooring



Furniture



Sofa Pillows



Valance Accent



Valance



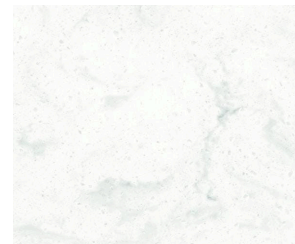
Rainier Décor



Backsplash



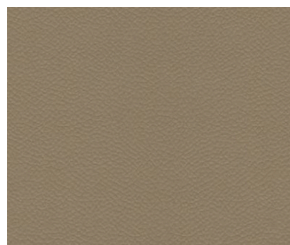
Bedsread



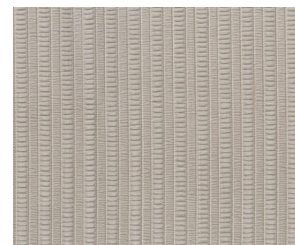
Countertop



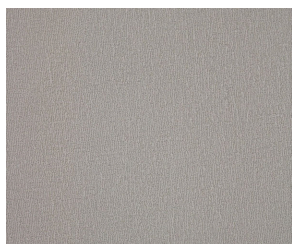
Flooring



Furniture



Sofa Pillows



Valance Accent



Valance



Solid Wood Cabinetry Options



Cape Cod



Lakewood



Rockport

BUILT BY THE BOLD, FOR THE BOLD

We became one of the world's top motorhome brands by building extraordinary coaches. We remain the industry rebels by continuously challenging the status quo in terms of quality, value, power, versatility, durability and style. Starting with the best chassis, and ending with a motorhome that outperforms and outlasts - Renegade RVs are designed for extreme luxury and extreme adventure. Renegade RVs are built for you.

STANDARDS & OPTIONS

CHASSIS AND CAB

- Freightliner® Cascadia 116 Single Axle
 - Detroit® DD13 Engine with 525HP, 1850 ft. lb. Torque
 - 41,000 lbs GVWR
 - Allison® TRV4000 Electronic 6-Speed Transmission or Detroit® DT12 12-Speed Transmission
 - 20,000 lbs Towing Capacity
 - Single 120-Gallon Aluminum Fuel Tank
 - 13-Gallon DEF Tank
 - Polished Aluminum Wheels with Center Caps
 - Airliner® Rear Air Suspension
 - Auto Drain Valve for Air Brake Reservoirs
 - Digital Dash Cluster and 10" Infotainment System with AM-FM radio, Bluetooth, Apple® Carplay™, and Android® Auto™ Compatible
 - Rear and Side View Cameras
 - Upgraded Cab Sound System
 - Amplified Cab Speakers
 - Powered 8" Subwoofer
 - Premium Freightliner® Sound and Thermal Insulation Package
 - LED Headlight with Bumper-Integrated Fog Lights
 - Power Windows and Door Locks
 - Power/Heated Remote-Control Mirrors
 - Air Ride Driver and Passenger Seat Pedestals with Swivels
 - Soft Touch Driver/Passenger Seats with Armrests
 - Full Cab Mat
 - Auxiliary Air Chuck and Hose
 - Freightliner® Safety Assurance Package:
 - Collision Mitigation
 - Adaptive Cruise Control
 - Lane Departure Warning
 - Detroit® Connect Safety Event Viewer Package
-

EXTERIOR FEATURES

- Aerodynamic Fiberglass Front and Rear Caps and Transition
 - Four-Point Hydraulic Leveling System with App
 - Lighted Exterior Entry Door Assist Handle
 - Keyless Entry
 - Powered Folding Double-Entry Steps
 - (7) Colorway Paint Options
 - Roof-Mounted Girard® 2-Stage Lateral Arm Awning with LED Lights Integrated into Front and Rear Fiberglass Caps
 - Slide Toppers with Covers
 - Frameless Dual-Pane Tinted Windows with Screens
 - Power Locking, Side-Swing Aluminum Compartment Doors with Single-Handle Paddle Latches and Double-Catch
 - Steel Storage Compartments with Carpeted Lining
 - Diamond Shield® Nano-Fusion™ Paint Protection (Front Mask)
 - Full-Width Rock Guard Mud Flap
-

CONSTRUCTION

- 2" Vacuum Bond Laminated Sidewalls with Welded Aluminum Framing
 - 1.5" High-Density Foam Insulation in Sidewalls and Roof
 - Welded Aluminum Roof Truss System with Framed Cutouts
 - "Super Sandwich" Floor Construction with Composite Underbelly Includes:
 - 2" Welded Steel Floor Joist System Mounted to (6" and 1.5") Steel Longitudinal Floor Beams
 - 3/4" Fir Plywood Deck Over 2 x 4 Wood-Framed Residential Floor with Thermal and Sound-Deadening Insulation
-

PLUMBING SYSTEMS

- 150 Gallon Fresh Water Tank
 - 75 Gallon Gray Tank
 - 75 Gallon Black Tank
 - See-Level® Tank Monitoring System
 - Full Maintenance Wet Bay
 - Black Tank Flush System
 - Fresh Water Fill - City Water Hookup
 - Outside Faucet with Sprayer
 - On-Demand Water Pump
 - Whole House Water Filtration System
-

INTERIOR FEATURES

- (3) Interior Décor Options
 - Décor Coordinating Fabric Valances
 - Double Roller Day/Night Shades (Manual)
 - Soft Touch Padded Walls and Ceiling
 - 12" x 24" Porcelain Tile Flooring Throughout
 - Maple Hardwood Cabinetry
 - 3-Wood Stain Color Options, 2-Finish Options
 - Dovetail Drawers on Soft Closing Slides
 - Framed Raised Panel Doors on Hidden Hinges
 - Pantry
 - Hardwood Slide Fascia with Lighting
 - Decorative Ceiling Treatment with Lighting
 - Satin Nickel Door Hardware
 - Satin Nickel Kitchen Faucet
 - Solid Surface Countertops Throughout
 - Rectangular Single Bowl Undermount Kitchen Sink with Cover
 - Accent Lighting at Toe Kicks
 - Grouted Tile Backsplash
 - LED Dimmable Lighting
 - Memory Foam Mattress
 - Ultra Soft Touch Vinyl Furniture Upholstery
 - Convertible Booth Dinette with Storage
 - Mini Booth Dinette with Storage
 - Sofa Sleeper, Hide-a-Bed
 - Aerocap with Storage Cabinet
-

BATH

- Maple Hardwood Vanity and Medicine Storage Cabinets
 - LED Vanity Light
 - Deluxe Satin Nickel Bath Faucet and Adjustable Showerhead
 - Satin Nickel Towel Bar, Towel Ring, and Toilet Paper Holder
 - Porcelain Macerator Toilet with Push Button Flush
 - Solid Surface Countertop with Integrated Sink
 - Solid Surface Shower with Wall Tile Inlay and Sliding Glass Door
 - Skylight Over Shower
-

APPLIANCES

- 18 cu. ft. French Door Residential Refrigerator with Stainless-Steel Doors
 - Recessed 2-Burner Induction Cooktop with Polished Solid Surface Covers
 - 1.7 cu. ft. Stainless-Steel Convection Microwave Oven
 - Aqua-Hot® 450D Hydronic Water and Zone Heating System
 - (2) 15,000 BTU Roof A/C with Heat Pumps and Plumbed Condensation Lines
 - Ducted Air Conditioning
 - MaxxAir® Power Vents
 - Central Vacuum System
 - Pre-Wired and Plumbed for Optional Washer/Dryer
 - Carbon Monoxide, LP and Smoke Detectors, and Fire Extinguisher
-

ELECTRICAL SYSTEMS

- 8KW Onan® Quiet Diesel Generator
 - Automatic Generator Start System
 - 50-Amp Electrical Panel
 - 3,000W True Sine Wave Inverter
 - Transfer Switch with Surge Protection
 - (2) 330Ah AGM House Battery
 - (3) 200W Solar Panels
 - Multiplex Control System with Wi-Fi App Control
 - USB/USB-C Charging in Living Area, Bedroom, Kitchen, and Bunk Areas
 - 50-Amp Power Retractable Shore Cord Reel
 - 12V Holding Tank Heaters, Gray and Black Tanks
-

ENTERTAINMENT SYSTEMS

- 50" 4K Smart LED TV in Living Area
 - Soundbar Home Theater with Bluetooth Streaming and Wireless Subwoofer in Living Area
 - 32" 4K Smart LED TV in the Bedroom
 - Exterior Entertainment Center
 - 43" Smart LED TV on Swivel
 - Soundbar with Bluetooth Streaming
 - USB Charging
 - Winegard® Connect 5G Rooftop OTA Antenna with Wi-Fi and 5G Ready (SIM Card Req.)
-

POPULAR OPTIONS

- Powered Reclining Theater Seat ILO Standard Sofa
 - High Gloss Cabinet Finish
 - Floor Heat Throughout
 - Starlink® Flat High-Performance with Wedge Mount (N/A with HD Trav'ler Pro)
 - Requires Wi-Fi Ranger® Converge™ HD Rooftop Antenna ILO Winegard Connect 5G
 - Winegard® In-Motion Satellite System
 - Winegard® Trav'ler Stationary HD Satellite System (N/A with Starlink®)
 - Add Up to 2 More 200W Solar Panels (Quantity Varies by Floorplan and Options)
 - (2) 270Ah High-Capacity Lithium Batteries ILO AGM Batteries
 - Additional 270Ah High-Capacity Lithium Battery (Limit 2)
 - Additional 3000W True Sine Wave Inverter with Forward A/C Connected
 - Freightliner® Blackout Package - Grille, Bezel, Mirrors, and Wheels
 - Washer and Dryer Stack
 - Premium Exterior Refrigerator/Freezer on Slide Tray
 - Holding Tank Sewage Macerator System
-

	38EMB	40ERB
Overall Exterior Length	38' 6"	40' 5"
Exterior Width	99.25"	99.25"
Overall Exterior Height (Includes 15,000 BTU Roof Air Conditioners)	13' 1"	13' 1"
Interior Height	84"	84"
Fuel Tank Capacity	120 Gallons	120 Gallons
Fresh Water	150 Gallons	150 Gallons
Gray Water	75 Gallons	75 Gallons
Black Water	75 Gallons	75 Gallons

THE RENEGADE RV WARRANTY

New Renegade motorhomes are covered by a 1-year unlimited miles limited warranty, plus a 3-year 36,000-mile limited structural warranty.

All Renegade motorhome chassis, engines and transmissions, and drivetrain warranties are provided and administered by their respective manufacturers.

For specific information about these warranties, [ask your dealer](#) or [contact Renegade RV](#).

