

Renegade  
RV



VERONA  
2023

EXTREME LUXURY | EXTREME PURPOSE | EXTREME DURABILITY

*Confidence to go anywhere*



*Renegade*

# VERONA

The Verona combines travel friendly performance and luxury into every detail. Beautiful hardwood cabinets, polished solid surface countertops, stainless steel appliances and ultra soft furniture are just a few of the features throughout the Verona. With ample interior and exterior storage, as well as comfortable interiors, the Verona makes traveling the road a breeze.

Featured to the right, we have the Verona 40VBH in our Gray Mist décor, with our new Lakewood cabinetry.









*Renegade*  
**VERONA**  
AT A GLANCE

Exterior height **12'10"**  
Exterior width **99 1/4"**  
Exterior length **36' 11" - 40' 2"**  
Interior height **84"**  
Interior width **95 1/2"**

Fuel capacity **100 Gallons**  
Fresh water capacity **150 Gallons**  
Grey water capacity **75 Gallons**  
Black water capacity **75 Gallons**  
DEF **6 Gallons**



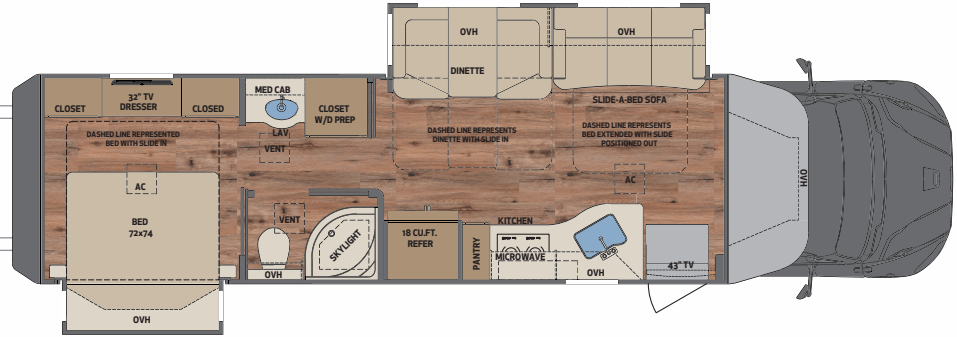
Featured options on above image  
• Cabover bunk upgrade  
• American racing wheel upgrade

## KEY FEATURES

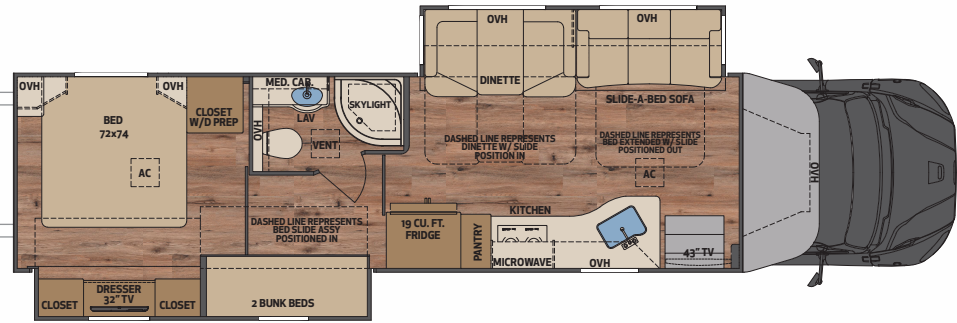
- 360HP w/Allison 3200TRV Transmission
- 250D AquaHot Hydronic heating
- Multiplex system with color touch panel & Bluetooth app control
- All electric coach w/ single 3000w Pure Sine Wave Inverter
- Four full Paint color options
- Four-Point automatic hydraulic leveling system
- Electric lateral arm awning with integrated LED lights
- Solid hardwood cabinets and solid surface countertops



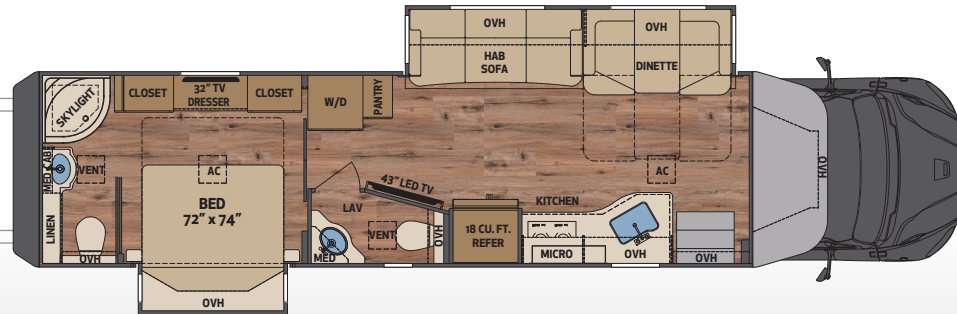
**36VSB** 36' mid bath, 2 slides | Wheelbase 285"



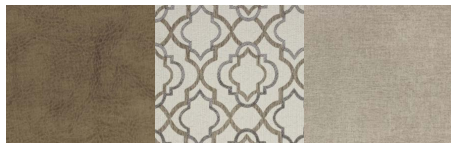
**40VBH** 40' mid bath, 2 slides | Wheelbase 309"



**40VRB** 40' mid and rear bath, 2 slides | Wheelbase 309"



INTERIOR DÉCORS



GEMSTONE

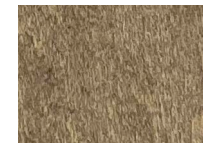


GRAY MIST



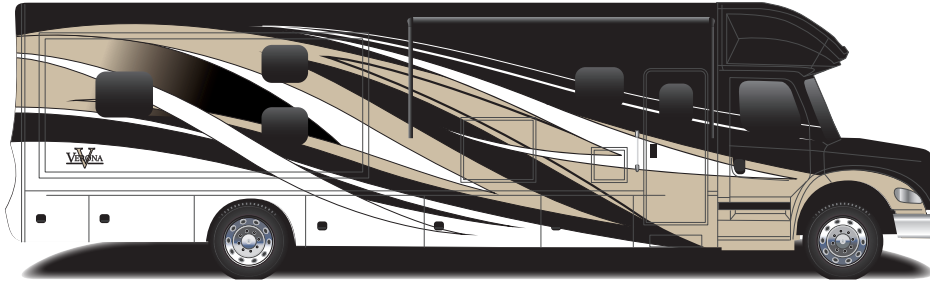
SANDSTONE

CABINETS

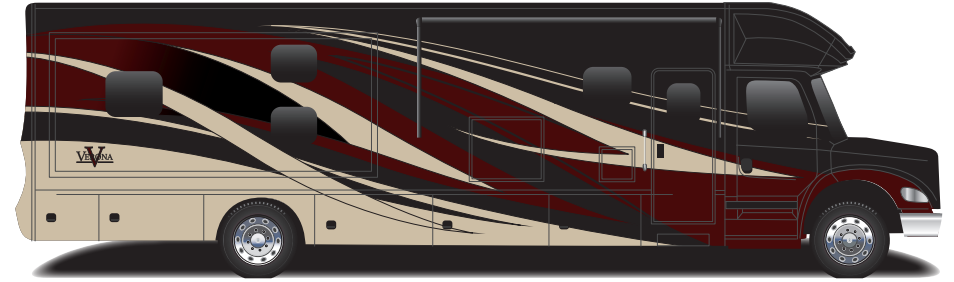


LAKWOOD

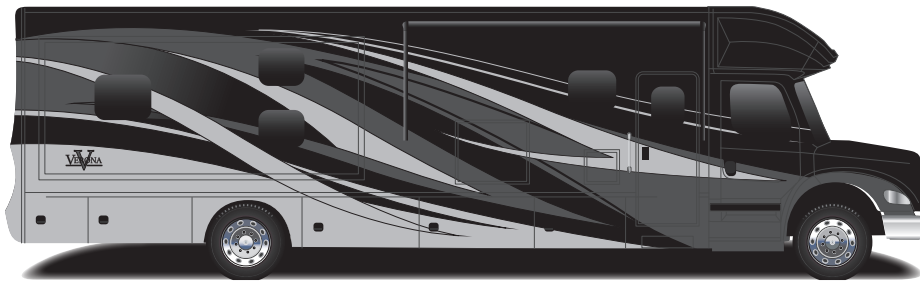




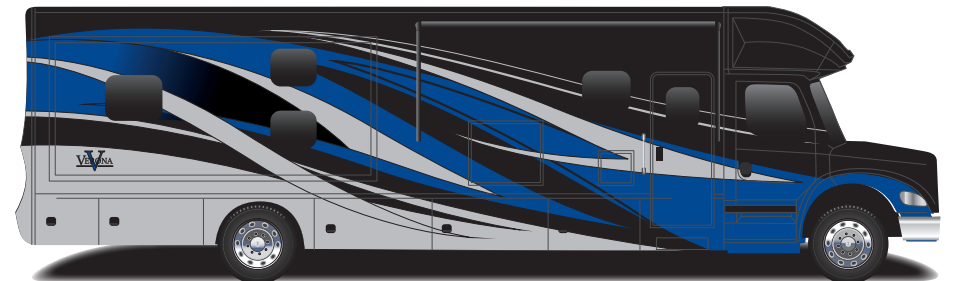
COASTLINE



HEATWAVE



INGOT



SKYLINE



## CAB/CHASSIS

Freightliner M2-106, 34,300 GVWR  
 Cummins L9 360HP, 1150 lb. ft. torque  
 Allison 3200TRV electronic 6-speed transmission  
 Accuride polished aluminum wheels with center caps  
 Air brakes with 4-wheel ABS and auto slack adjusters  
 Trailer brake controller  
 Airliner rear air suspension  
 Dual 50-gallon aluminum fuel tanks, total 100-gallon capacity  
 One-piece panoramic cab windshield  
 Aluminum automotive cab construction, designed and tested for occupant protection  
 3-piece chrome front bumper with integrated fog lights  
 Premium Freightliner heat/sound insulation package  
 Power driver/passenger windows and door locks  
 Power/heated remote-control mirrors  
 Automotive cab carpet liner  
 Color rear and  
 LED headlights  
 Freightliner "Safety Assurance Package" includes:

- Enhanced Cruise Control
- Lane Guidance
- Electronic Stability Control
- Collision Mitigation

## EXTERIOR

Powder-coated steel storage compartments with carpeted lining  
 Side-swing aluminum compartment doors w/ single handle paddle latches and double catch  
 RV entrance door w/ screen, deadbolt, frameless window, & pleated shade  
 Girard GG lateral arm awning w/ LED lights  
 Slide topper  
 Frameless dual-pane tinted windows with tilt-opening design and screens  
 20,000 lb. hitch, 7-way tow connector w/ 2" & 2 5/16" ball  
 Heavy duty electric double entry step  
 Aerodynamic fiberglass front and rear caps & transition  
 Fiberglass molded tank covers and entry steps  
 LED brake, turn & high mount brake lights  
 Diamond shield front mask  
 Full body paint available in 4 décors  
 Undercoating

## ELECTRICAL SYSTEMS

8KW Onan quiet diesel generator  
 Automatic generator start system  
 3,000Watt true sine wave inverter  
 (1) 8D AGM house battery  
 Multiplex lighting system with Smartphone App  
 50-amp electrical panel  
 USB/110V charging outlets in bedroom and bunk areas  
 Dual 12V dash outlets  
 Power retract 50-amp cord reel  
 Solar charging system pre-wire  
 Automatic transfer switch with surge protection

## CONSTRUCTION

2" vacuum bond laminated sidewalls w/ welded tubular aluminum framing  
 Welded tubular aluminum roof truss system w/ framed cutouts  
 One-piece crowned fiberglass roof surface  
 "Super Sandwich" floor construction w/ galvanized vapor barrier includes:

- 3/4" fir plywood deck over 2 x 4 wood-framed residential floor
- 2" welded steel floor Joist system
- Mounted to 3" steel longitudinal floor beams
- 3.5" premium grade sound deadening and thermal insulation in floor

## INTERIOR

Ultra-Soft sofa w/ queen size slide-a-bed sleeper  
 Ultra-Soft Dinette w/ convertible bed & solid surface table  
 Premium LVT Plank flooring throughout  
 Solid hardwood cabinets w/traditional Style mitered doors  
 Soft close full extension ball bearing drawer guides throughout  
 Energy efficient LED flush mount ceiling lighting throughout  
 Designer bedspread w/ pillow shams and accent pillows  
 iRelaxmemory foam mattress, (72" x 74" King)  
 Full length wardrobe w/ removable shelf & shoe storage  
 30" x 80" bunk beds w/ privacy curtains (40VBH model only)  
 Triple storage drawers under bottom bunk bed (40VBH model only)

## BATH

Deluxe hardwood vanity, medicine & linen storage cabinets  
 Color coordinated fiberglass shower with glass door & shower  
 Shower skylight

Whole house water filtration system  
 Polished solid surface countertop w/ solid surface sink  
 Deluxe bath faucet & adjustable shower head  
 Porcelain macerator toilet w/push button

## APPLIANCES

18 cu. ft. frenchdoor residential refer w/ icemaker & stainless steel doors  
 Recessed 2 burner Electric induction cooktop with polished Solid surface covers  
 Stainless steel convection microwave oven  
 (2) 15,000 BTU low profile roof A/C w/heat pumps, plumbed condensation lines  
 Ducted heating and air conditioning  
 Pre-wired & plumbed for optional stackable washer/dryer  
 LP/CO & smoke detectors, fire extinguisher

## ENTERTAINMENT SYSTEM

Garmin touch screen, Bluetooth, GPS, RV maps and color camera Monitor  
 Upgraded Cab Sound System -JBL5.25" Dash and 6.25" ceiling speakers  
 Sirius/XM satellite ready (requires subscription)  
 Soundbar home theater w/ Bluetooth & wireless subwoofer  
 43" 4K Smart LED TV in living area mounted on articulating swing arm  
 32" 4K Smart LED TV w/Blu-ray/DVD player in bedroom  
 Exterior ent. ctr. with 32" LED TV with Soundbar on swivel, USB charging  
 Winegard In Motion satellite system (satellite control boxes not included; subscription required for TV & radio services).

## POPULAR OPTIONS

Stackable washer/dryer  
 Cabover bunk w/TV, window & power shade  
 Winegard Connect 2.0 rooftop OTA antenna w/WiFi& 4G ready (SIM Card req.)  
 Winegard Trav'ler satellite system  
 Lithium battery upgrade  
 3-175W solar panels  
 Full width mudflap  
 Theatre seating  
 Power retract water hose reel



## RENEGADE WARRANTY

Renegade MY 2023 motorhomes are covered by a 1-year unlimited miles limited warranty, plus a 3-year 36,000-mile limited structural warranty.

All Renegade motorhome chassis, engines and transmissions, and drivetrain warranties are provided and administered by their respective manufacturers.

For specific information about these warranties, ask your dealer or contact Renegade RV.



**Renegade**  
RV  
REVGROUP

*Confidence to go anywhere*

52216 SR 15 Bristol, IN 46507  
888.522.1126 | [RenegadeRV.com](http://RenegadeRV.com)

Features and options may vary from  
descriptions without notice.