

## RENEGADE WARRANTY

Renegade MY 2021 motorhomes are covered by a 1-year unlimited miles limited warranty, plus a 3-year 36,000-mile limited structural warranty.

All Renegade motorhome chassis, engines and transmissions, and drivetrain warranties are provided and administered by their respective manufacturers. For specific information about these warranties, ask your dealer or contact Renegade RV.



**Renegade**  
RV  
REV GROUP

*Confidence to go anywhere*

52216 SR 15 Bristol, IN 46507  
888.522.1126 | [RenegadeRV.com](http://RenegadeRV.com)

Features and options may vary from descriptions without notice.

*XL*

2021

EXTREME LUXURY

EXTREME PURPOSE

EXTREME DURABILITY



*Renegade*  
R

REV GROUP

*Confidence to go anywhere*





# Renegade XL

The Renegade XL makes an impression that you not only live life large, but you live life on a grand scale. Polished porcelain tiled floors and solid surface countertops with a stylish backsplash makes this motor coach both unique and luxurious. The XL is beautiful inside and out and gives you the ability to travel in style while allowing you to have all the comforts of home.

## Featured to the left:

Experience the feeling of openness with the functional quad-slide floor plan of the 2021 XL 43DB. The Villa furniture is covered with luxurious Ultra Leather fabric and is standard in the 2021 XL. The 43DB shown features stained Maple hardwood cabinetry, Breccia Silver porcelain tile floor, tile kitchen backsplash, polished solid surface counter tops all coordinated in the Titanium Décor package. The optional fireplace adds a touch of Home to this 43DB floor plan.

# THE *Renegade XL* AT A GLANCE

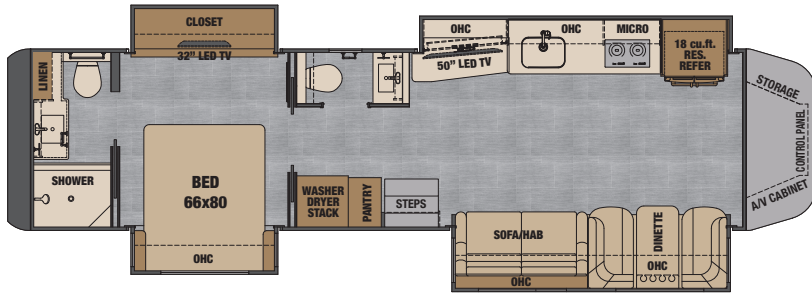
Exterior height **12'10"**  
Exterior width **100.25"**  
Exterior length **43'-45'**  
Interior height **84"**  
Interior width **95.5"**

Fuel capacity **120 Gallons**  
Fresh water capacity **150 Gallons**  
Grey water capacity **75 Gallons**  
Black water capacity **75 Gallons**

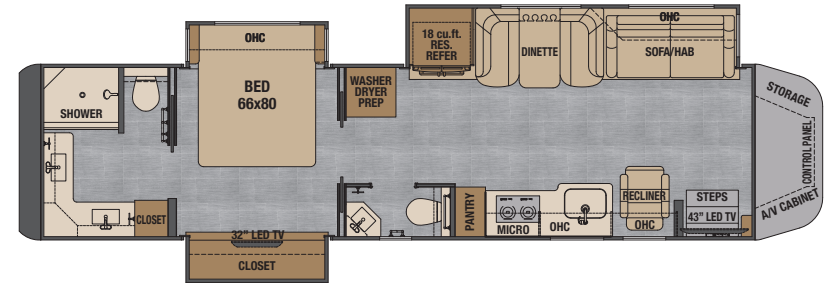


## KEY FEATURES

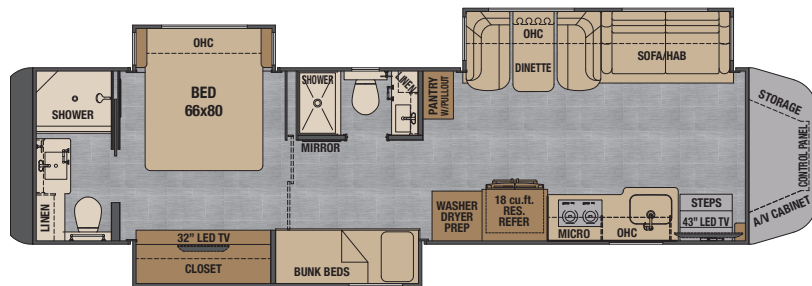
- HP options: 500HP up to 600HP
- 450D AquaHot hydronic heating system
- Multiplex system with color touch panel & Bluetooth app control
- All electric coach w/one 3000 watt Magnum Hybrid inverter
- Six full paint color options
- Four-Point automatic hydraulic leveling system
- Electric lateral arm awning with integrated LED lights & matching roadside profile
- Solid hardwood cabinets and solid surface countertops



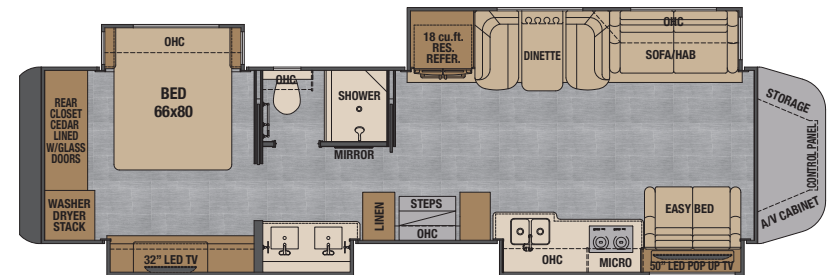
**X43DB** 43' mid entry quad slide



**X45QB** 45' front entry 3 slides extra large bath & living space



**X45BBC** 45' front entry 3 slides



**X45QS** 45' mid bath, rear closet quad slide



RIVERSTONE



SHIMMERING SAND



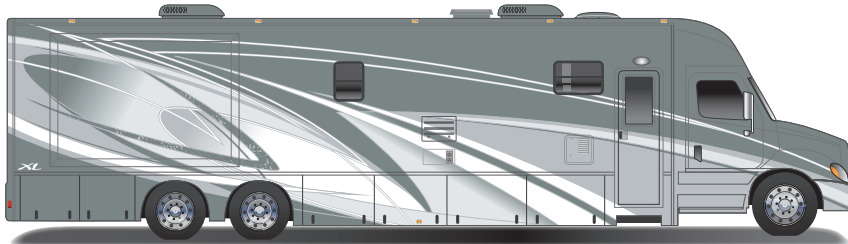
SMOKEY TAUPE



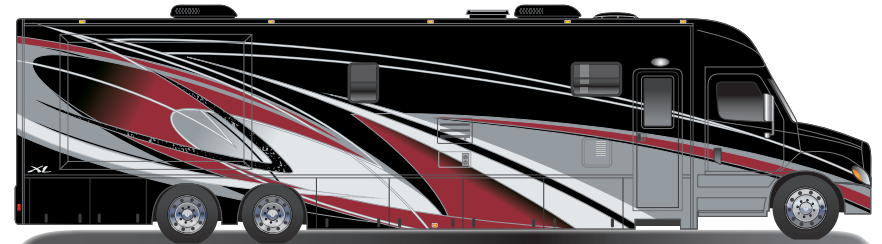
TITANIUM

*Renegade XL*

PAINT OPTIONS



BLIZZARD



RUBY



COPPER CANYON



PEWTER



CHESTNUT



MARINE

## CAB/CHASSIS

Freightliner Cascadia or Volvo chassis with product specific engine and transmission options and specifications  
Polished aluminum wheels with center caps  
Air ride rear suspension system  
All wheel air disc brakes with ABS  
3 stage engine compression brake  
Villa heated driver/passenger captain's chairs w/armrests, and air ride pedestals  
Power windows and door locks  
Electronic cruise control  
Power/heated cab door controlled mirrors  
Tilt and telescoping steering wheel  
Premium sound and thermal insulation package  
Fog lights integrated into front bumper  
Removable automotive cab floor liner w/matching floor mats

## CONSTRUCTION

Tubular aluminum welded sidewall and roof structure  
Two inch vacuum-laminated sidewalls  
High-density foam insulation in sidewalls and roof  
One-piece crowned fiberglass roof  
"Super Sandwich" floor construction including:

- ¾" fir plywood deck over 2x4 wood-framed floor
- 2" welded tubular steel floor joist system
- 3.5" premium grade sound deadener and thermal insulation in floor
- Galvanized steel vapor barrier

## EXTERIOR

Premium four-color, full body paint with clearcoat  
Diamond shield frontal paint protection  
Bright stainless steel accents on rear cap  
LED brake, turn and signal  
LED docking lights, sides and rear of coach  
Aerodynamic fiberglass front and rear caps  
Full-width mud flap with stainless steel logo  
Frameless tinted dual-pane insulated windows with screens  
Equalizer fully automatic 4-point hydraulic leveling system  
30,000 lb. hitch, 7 way tow connector  
Lighted entry door assist handle with keyless entry touch pad  
Powder-coated steel baggage compartments with carpeted lining  
Side-swing baggage doors with remote locking single handle chrome latches and strut assist  
ZipDee lateral arm awning with LED lights  
Aluminum wrapped auto deploy/retract awnings over all slide outs

## ELECTRICAL SYSTEMS

Two 8D AGM batteries  
Transfer switch with built-in surge guard  
3000 watt magnum hybrid inverter  
50 amp electrical panel  
12V tank heaters on grey and black holding tanks  
USB/110V charging outlets in bedroom, bunk, dinette and sofa areas  
Pre-wired solar charging system  
Deluxe MultiPlex electrical and lighting system with bluetooth app control  
Powered shore cord reel  
12.5KW Onan quiet diesel generator with w/AGS

## INTERIOR

Solid hardwood cabinets with raised panel doors, satin nickel hardware and hidden hinges  
Dovetail drawers and stacked silverware drawer  
Polished, solid-surface countertops throughout  
Soft-closing, full-extension, ball-bearing drawer slides  
Stainless steel kitchen sink with solid surface covers  
Satin nickel faucet with pull-out sprayer  
Soft-touch padded vinyl ceiling and walls  
Hardwood window valances with fabric accents  
Day/night roller shades  
UltraLeather furniture package  
Villa booth dinette  
Villa sofa with queen size hide-a-bed sleeper (air mattress)  
Energy efficient flush mount LED ceiling, wall sconce, bath and toe kick lighting  
Lighted tile entry step area  
66" x 80" iRelax memory foam mattress  
Choice of four designer interior décors  
MaxxAir fans in bathroom  
Polished porcelain tile flooring throughout  
Tiled galley backsplash

## APPLIANCES

18 cu. ft. stainless steel french door residential refer  
Recessed 2-burner electric induction cooktop w/solid surface covers  
Stainless steel convection microwave oven  
450D AquaHot hydronic heating system with engine pre-heat  
(3) 15,000 BTU low profile roof ducted A/C w/heat pumps & chill grill  
A/C purge pumps with condensation lines to bottom of coach  
Pre-wired & plumbed for optional washer/dryer  
LP/CO & smoke detectors, fire extinguisher

## BATH

One-piece fiberglass shower with enclosure  
Solid hardwood vanity, medicine, and storage cabinets (N/A in the X45QS)  
Satin nickel bath fixtures  
Porcelain macerator toilet  
Whole house water filter  
Black tank flush system

## ENTERTAINMENT SYSTEM

43" 4K Smart LED TV in living area (STD on X45QB and X45BBC)  
50" 4K Smart LED TV in living area (STD on X43DB and X45QS)  
Outside ent. ctr. w/ 43" 4K LED TV, Soundbar & USB charging  
32" 4K Smart LED TV in bedroom  
Soundbar home theatre system with wireless subwoofer  
BluRay/DVD player with remote in living room & bedroom  
Winegard connect 2.0 rooftop OTA antenna w/WiFi booster and 4G ready (SIM card req.)  
Color side and rear vision cameras  
HD stationary satellite system (receiver not included, pre-wired for InMotion satellite)  
Premium touch screen dash radio with bluetooth & integrated color monitor  
Integrated GPS with RV navigation maps  
Sirius/XM satellite ready (requires customer subscription)  
Cab sound system upgrade - speakers, amp and subwoofer (Cascadia only)

## POPULAR OPTIONS

Stackable washer/dryer  
Roof-mounted solar panels  
Central vacuum system  
Heated tile floor  
InMotion satellite system  
Storage credenza with table and free standing chairs  
Exterior refrigerator/freezer on slide tray  
Solid-surface shower  
Theatre seating  
Battle Born lithium battery package