

Renegade
RV
REV GROUP

LEGENDARY RENEGADE QUALITY 2020
VALENCIA



**EXTREME LUXURY
EXTREME PURPOSE
EXTREME DURABILITY**



The Valencia interior has a modern, stylish décor, featuring warm tones and cool features. Spacious and comfortable, there is plenty of seating and sleeping capacity in the main living area, including a 60 x 80" cabover Queen size bed, a slide-a-bed Queen size sleeper, and a cozy convertible booth dinette. Valencia 38BB shown in Driftwood décor.



YOUR DREAMS AWAIT

The Valencia Flex Space has a pair of 30" x 77" quick removable bunk beds, each with its own LED lighting, vented window, privacy curtain, and 110V/USB charging port. Plus, there's convenient storage under the bunks. Within seconds, this area can convert to an additional closet, a handy workspace, a convenient place for pet beds and crates...or just about anything you can think of. And when guests are joining you, pop the bunks back in, and it's off to the next fun adventure.

VALENCIA AT A GLANCE

EXTERIOR HEIGHT	<12' 6">
EXTERIOR WIDTH	<99.25">
EXTERIOR LENGTH	<38' 2">
INTERIOR HEIGHT	<84">
WHEELBASE	<279">
FUEL CAPACITY	<100 GALLONS>
DEF TANK CAPACITY	<10 GALLONS>
FRESH WATER CAPACITY	<150 GALLONS>
GREY WATER CAPACITY	<75 GALLONS>
BLACK WATER CAPACITY	<75 GALLONS>
LP CAPACITY	<20 GALLONS/84 LBS.>

The 35MB Wheelbase is 249"

BED & BATH

The Valencia master bedroom is a model of efficiency, with a King size 72" x 74" bed with an iRelax memory foam mattress and padded headboard, a spacious dresser and great his and hers closets. Plus there are nightstands on both sides of the bed along with convenient 110V/USB charging ports. Valencia 38BB shown in Driftwood décor.

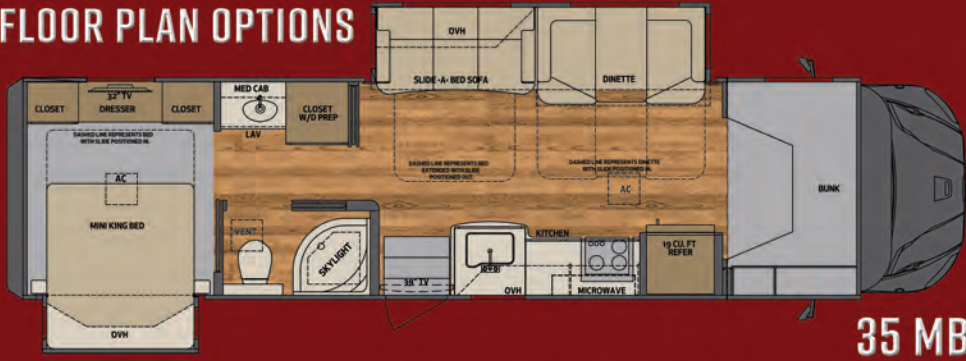




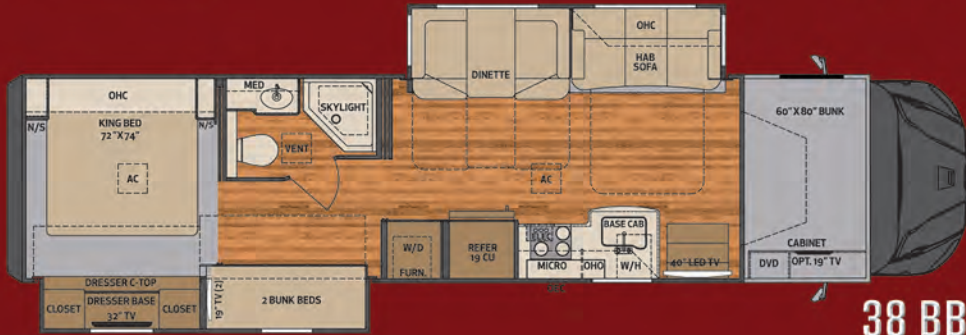
KITCHEN

Valencia's kitchen features Cherry hardwood cabinets topped with solid surface countertops and glass tile backsplash, offering great storage. The standard stainless steel appliances include a 19 cu. ft. Whirlpool residential refrigerator with icemaker, recessed 3-burner sealed LP gas cooktop with covers, and a convection microwave oven. There's a large cabinet next to the galley for additional storage, or a convenient location if you add the optional stackable washer and dryer. Valencia 38BB shown in Driftwood décor.

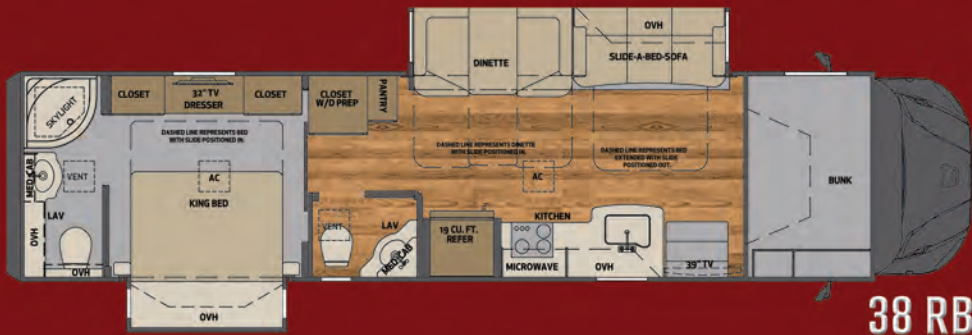
FLOOR PLAN OPTIONS



35 MB



38 BB



38 RB



38 RW

PAINT OPTIONS



CRIMSON (ON COVER)



ROYAL



RUSSET

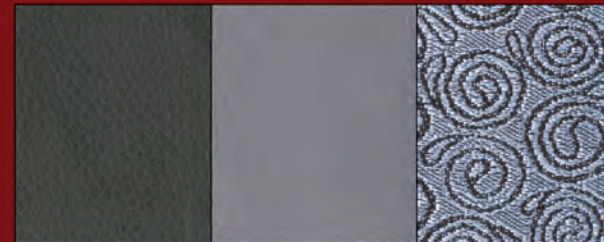


GRAPHITE

INTERIOR OPTIONS



ICED LATTE



CRACKED PEPPER



DRIFTWOOD (PICTURED)

STANDARD & OPTIONAL FEATURES

CONSTRUCTION

- Smooth, high-gloss, one-piece fiberglass wall surface
- Two inch vacuum laminated sidewalls with welded tubular aluminum framing
- One and a half inch high density foam insulation in sidewalls and roof
- Welded tubular aluminum roof truss system with framed cutouts
- One piece crowned fiberglass roof surface
- "Super Sandwich" floor construction consisting of 3/4" fir plywood deck over 2x4 wood-framed residential floor
- 2" welded steel floor joist system, two mounted 3" steel longitudinal floor beams
- Three inch premium grade mineral wool sound deadener and thermal insulation in floor
- Galvanized steel vapor barrier

EXTERIOR FEATURES

- Full body paint available in four décors
- Powder-coated steel storage compartments with carpeted lining
- Undercoating
- Aluminum compartment doors with single handle paddle latches
- Exterior entry door handle
- RV entrance door with screen, deadbolt, and keyless entry door touchpad lock
- Girard lateral arm electric awning with LED lights
- Aluminum wrapped auto deploy/retract awnings over all slide outs
- Frameless tinted windows with tilt-opening design and screens
- 12,000 lb. Hitch, seven way tow Connector with two inch ball
- Equalizer fully automatic 4-point hydraulic leveling system and Bluetooth app control
- Aerodynamic fiberglass front and rear caps and transition
- LED brake, turn & high mount brake lights

ENTERTAINMENT SYSTEMS

- Premium touch screen dash radio with portable tablet
- Garmin RV specific navigation
- Sirius/XM radio ready (requires customer subscription)
- JBL custom tuned cab sound system with four speakers
- Color rear and side view cameras
- 40" LED TV on full motion swing arm in living area
- Soundbar home theater with Bluetooth

streaming and BluRay/DVD player

- 32" LED TV in bedroom
- Exterior entertainment center with 32" LED TV, AM/FM/CD/DVD player and speakers
- Rooftop antenna with standard and HD signal capability
- Pre-wired for In-motion SD and stationary HD satellite systems
- Exterior park cable hookup

INTERIOR FEATURES

- Choice of three designer interior decors
- Soft touch sofa with queen size slide-a-bed sleeper
- Soft touch dinette seating with convertible bed & solid surface table top
- Pull out storage drawers under dinette booth seats
- Solid hardwood cabinets with hardwood doors and hidden hinges
- Satin nickel cabinet door and drawer pulls
- Soft close full extension ball bearing drawer guides throughout
- Slide-out pantry with adjustable shelves (38RW only)
- Polished solid surface galley countertops
- Stonecast deep bowl kitchen sink with solid surface covers
- Wavy glass tile backsplash in galley
- Congoleum easy care one-piece flooring in living room, kitchen, hallway and bath
- Manual day/night roller shades
- Deluxe padded headboard
- 72" x 74" king size iRelax memory foam mattress
- Designer bedspread with pillows and shams
- Quick removable 30" x 77" bunkbeds with privacy curtains (38BB)
- Seven foot Interior ceiling height

ELECTRICAL SYSTEMS

- Multiplex lighting with color touch screen controller
- 8KW Onan quiet diesel generator
- 2,000 watt inverter
- 8D AGM house battery
- Automatic generator start system
- Power retract 50 amp power cord reel
- 50 amp electrical panel
- 12V holding tank heaters, grey and black tanks
- Exterior GFI receptacle doorside compartment
- Energy efficient LED flush mount ceiling lighting throughout
- USB/110V charging outlets in bedroom

and living room

- Pre-wired for solar charging system
- Multiplex system with color touch screen and Bluetooth app control
- 110V GFI outlet in roadside rear compartment
- Automatic power transfer switch with surge protection
- Chassis and Cab
- LED headlight assemblies
- Auxiliary air chuck and hose

BATH SYSTEMS & AMENITIES

- Deluxe hardwood vanity and medicine cabinet
- Color coordinated fiberglass shower with glass door and shower surround
- Shower skylight
- 12V high capacity on demand water pump
- Whole house water filter system
- Solid-surface countertop with integrated solid-surface sink
- Maxxair fan in bathroom with handheld remote
- Deluxe bath faucet and adjustable shower head
- Porcelain electric macerator toilet
- Black Tank Flush System
- Fresh water fill - city water hookup
- Outside faucet with sprayer

CHASSIS AND CAB

- Freightliner custom chassis S2RV
- 31,000 lb. GVWR, 46,000 lb. GCWR
- Cummins ISB 6.7L 360HP, 800 lb. ft. torque
- Allison 3000MH 6-speed automatic transmission with electronic push button shifter
- Cummins VG engine braking with dash switch
- Aluminum cab construction, designed and tested for occupant protection
- Fiberglass molded tank covers and entry steps
- One-piece panoramic cab windshield
- Flip forward hood assembly for fast and easy service access
- Premium freightliner heat/sound insulation package
- Freightliner heavy duty chromed steel 3 piece front bumper
- Power windows and door locks
- Power/heated remote control mirrors
- Tilt and telescoping steering wheel with electronic cruise control
- Air ride driver and passenger seat pedestals with swivels
- Soft Touch Driver/Passenger Seats w/

adjustable lumbar supports and armrests

- Removeable automotive style carpetliner with floor mats
- Deluxe cab carpeting with matching floor Mats
- Single 100 gallon fuel tank with side mounted fill
- Ten gallon DEF tank
- Air brakes with 4-Wheel ABS
- Airliner rear air ride suspension
- Polished aluminum wheels with center caps
- Bridgestone Ecopia R283A 295/75R22.5" tires

APPLIANCES & UTILITIES

- 19 cu. ft. residential refrigerator with stainless steel doors and icemaker
- Recessed stainless steel sealed 3-burner LP cooktop
- Stainless steel convection microwave oven
- 34,000 BTU LP gas furnace with electronic ignition
- 10 gallon gas/electric water heater
- Two 15,000 BTU low-profile roof A/C with heat pumps and chill grill
- Ducted heating and air conditioning
- Pre-wired and plumbed for optional washer and dryer
- Carbon monoxide, LP and smoke detectors, and fire Extinguisher
- Winterization kit

POPULAR OPTIONS

- Stackable washer and dryer
- Theater seating
- Storage ottoman
- Pair of roof-mounted 175 watt (each) solar panels
- Table with credenza and free standing dinette chairs
- Dometic 13 Cu. Ft. LP/110V refrigerator with icemaker
- Power retract water hose reel
- 60' x 74" queen bed with iRelax memory foam mattress
- Pair of DVD monitors (38BB model only)
- Congoleum one-piece vinyl floor in bedroom in lieu of carpeting
- Winegard In-motion satellite system
- Winegard Trav'ler satellite system
- LP quick disconnect LP line for gas grill
- 24" LED TV in cabover bed area
- Brake controller
- Diamond Shield paint protection



**LUXURY
QUALITY RVs.
FOR WORK,
PLAY,
OR BOTH.**

Renegade
RV

REVGROUP

your
DESIGNED FOR LIFE

52216 SR 15, BRISTOL IN 46507

888.522.1126

RENEGADERV.COM

YOUR VALENCIA DEALER: