

Renegade  
RV

EXTREME LUXURY | EXTREME PURPOSE | EXTREME DURABILITY  
www.renegaderv.com

# VERONA



LEGENDARY RENEGADE QUALITY - 2018 VERONA

OUR VEHICLES CONNECT AND PROTECT  
PEOPLE AROUND THE WORLD EVERY DAY.  
www.revgroup.com

**REV**  
Vehicles for life

LEGENDARY RENEGADE LUXURY - VERONA



The expansive kitchen of the 40VBH delivers unmatched functionality and storage. Solid Maple cabinets feature soft closing drawers, hidden hinges, and satin nickel hardware, topped with polished solid surface countertops and glass tile backsplash. Stainless Steel appliances include an over-the range convection microwave, sealed and recessed 3 burner LP cooktop, and a Samsung 18 cu. ft. French Door refrigerator with icemaker and pull-out drawer freezer. 40VBH Shown in Hazelnut Décor.



LEGENDARY RENEGADE QUALITY - VERONA

Spacious and Inviting with a classic flair that never goes out of style, Verona comes with ultra-soft touch furniture, Maple hardwood cabinetry, and polished solid surface countertops. Verona 36VSB is shown in Caramel Décor.

LEGENDARY RENEGADE QUALITY - VERONA



The ultrasoft dinette is ultra comfortable and converts to a sleeping area. Plus it offers two large slide-out drawers. Verona 40VBH shown in Hazelnut Décor.

40VBH Hazelnut Décor

## VERONA LIVING SPACES

Designed for today's active families, every Verona has an impressive collection of the must-have features that savvy buyers demand. With tremendous interior and exterior storage, and an amazingly fun to drive Freightliner M2 chassis, the Verona makes getting there half the fun. As comfortable as it is beautiful, you'll want to go further and stay longer every time you hit the road.



40VBH Hazelnut Décor



40VBH Hazelnut Décor



36VSB Caramel Decor



36VSB Private Bath

LEGENDARY RENEGADE QUALITY - VERONA

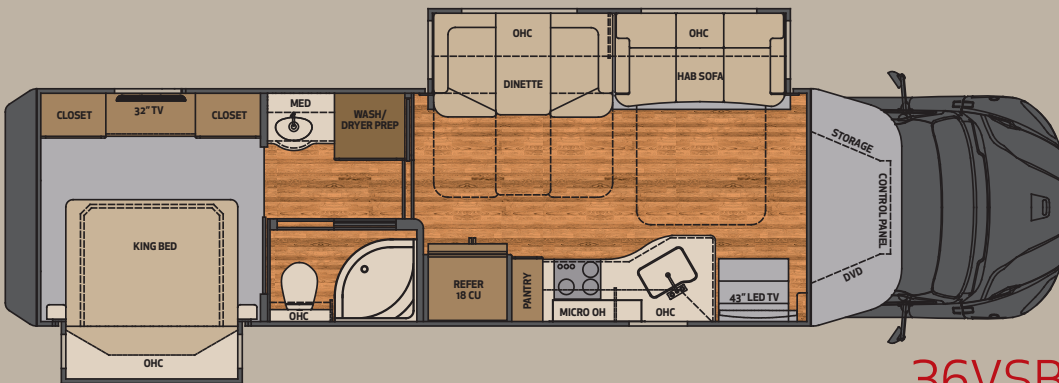
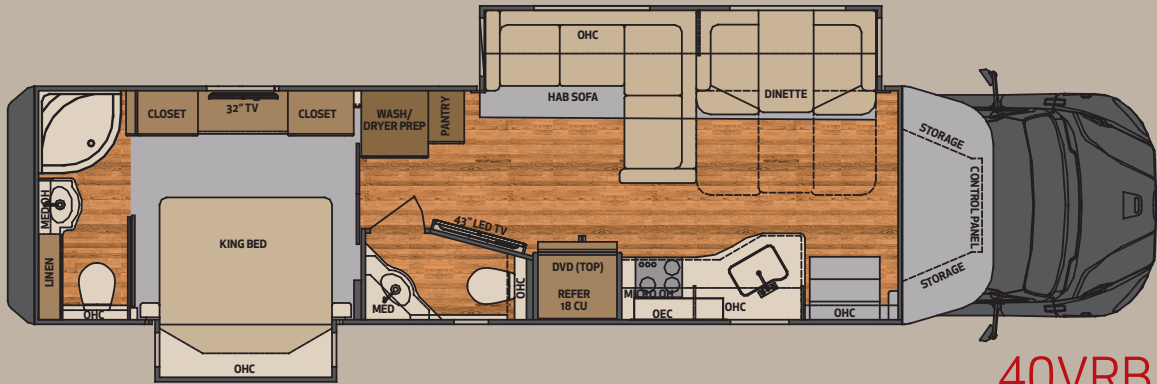
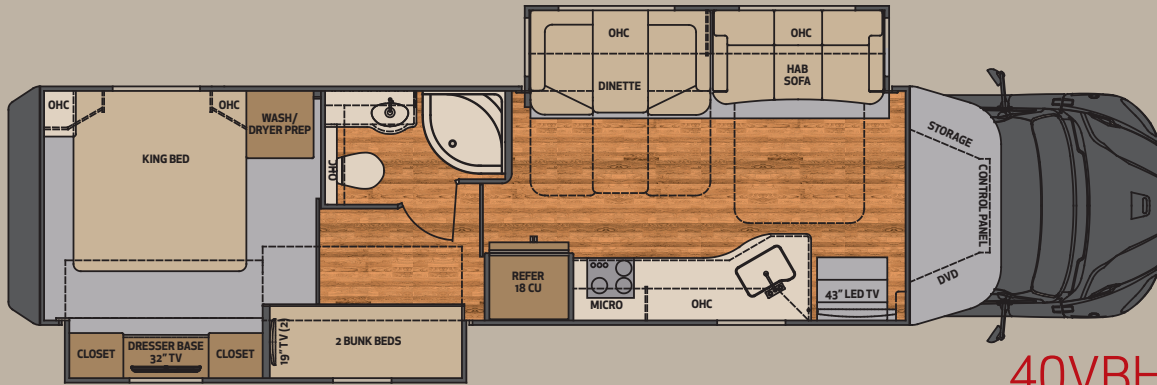


40VBH Hazelnut Decor



36VSB Caramel Decor

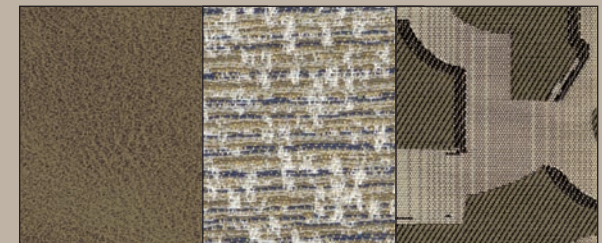
# FLOORPLAN OPTIONS



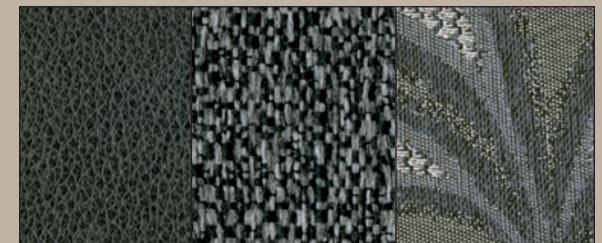
Overall Length VBH & VRB	40' 2"
Overall Length VSB	36' 10"
Exterior Width	99 - 1/4"
Wheelbase 40'	309"
Wheelbase 36' VSB	285"
Overall Exterior Height (Includes 15,000 BTU Roof Air Conditioners)	12' 8"
Interior Height	7' 0"
Fuel Capacity	100 Gallons
Fresh Water	150 Gallons
Grey Water	75 Gallons
Black Water	75 Gallons
LPG Capacity	24.2 Gallons/80 lbs.



CARAMEL DECOR



HAZELNUT DECOR



TWILIGHT DECOR

# STANDARD AND OPTIONAL FEATURES

## Construction

- Smooth High Gloss One Piece Fiberglass Wall Surface
- 2" Vacuum Laminated Sidewalls w/ Welded Tubular Aluminum Framing
- 1.5" High Density Foam Insulation in Sidewalls & Roof
- Two Piece Molded Rear Cap and Bumper System
- Welded Tubular Aluminum Roof Truss System with Framed Cutouts
- One Piece Crowned Fiberglass Roof Surface
- "Super Sandwich" Floor Construction Consisting of:
  - (1) 3/4" Fir Plywood Deck Over 2 x 4 Wood-Framed Residential Floor
  - (2) 2" Welded Tubular Steel Floor Joist System
  - (3) 3" Steel Longitudinal Floor Beams
- 3" Premium Grade Roxul Sound Deadening and Thermal Insulation in Floor
- Galvanized Steel Vapor Barrier

## Exterior Features

- Full Body Paint Package with Clearcoat
- LED Brake and Turn Lights
- Carefree of Colorado Lateral Arm Awning w/ LED Lights
- Aluminum Clad Slide Toppers
- Keyless Entry System
- Frameless Tinted Windows with Tilt-opening Design and Screens
- Exterior Entertainment Center w/ LG 32" LED TV, AM/FM/CD/DVD Player
- Fully Automatic 4 Point Hydraulic Leveling
- 20,000 lb. Hitch
- 7 way Flat Pin Tow Connection

## Entertainment Systems

- Premium Touch Screen Dash Radio/CD/DVD with CarPlay Integrated Color Monitor
- JBL Custom Tuned Cab Sound System
- Color Side and Rear View Cameras
- LG Home Theater System with LG BluRay Player and Remote
- LG 43" LED TV in Living Area
- LG 32" LED TV in Bedroom w/ BluRay Player
- In-Motion Satellite System
- Pre-wired for HD Satellite System

## Interior Features and Décor

- Ultra-Soft Touch Furniture Package, Sofa, Dinette and Driver/Passenger Seats
- Ultra-Soft Touch Sofa with Queen Size Slide-a-bed Sleeper
- Solid Maple Hardwood Cabinets, Maple Hardwood Doors with Hidden Hinges
- Soft Close Full Extension Ball Bearing Drawer Guides
- Polished Solid Surface Countertops and Dinette Table
- Stonecast Deep Bowl Kitchen Sink with Solid Surface Covers
- Armstrong Luxe Plank LVT Flooring (Kitchen, Hallway, and Bath)
- Energy Efficient LED Flush Mount Ceiling Lighting Throughout
- LED Floor Level Lighting Throughout
- King Size iRelax Memory Foam Mattress, 72" x 74"
- Full Length Wardrobe with Removable Bottom Shelf
- 30" x 80" Bunk Beds with Privacy Curtains (40VBH)
- Lighted Entry Step area with Rubber Step Treads and Under-step Storage

## Electrical Systems

- 8KW Onan Quiet Diesel Generator with Auto Generator Start System
- 2,000 Watt Inverter
- (3) Group 27 AGM House Batteries
- 50 Amp Electrical Panel
- Deluxe LED Lighting System
- 12V Holding Tank Heaters on Grey & Black Tanks
- USB Charging in Bedroom and Living Room
- Pre wired for Solar Charging System

## Bath Systems & Amenities

- Deluxe Hardwood Vanity, Medicine & Linen Storage Cabinets
- Color Coordinated Fiberglass Shower w/ Glass Door
- Shower Skylight
- Whole House Water Filter System
- Black Tank Flush System
- Porcelain Electric Macerator Toilet

## Chassis and Cab

- Freightliner M2, 34,300 GVWR, 60,000 GCWR
- Cummins L9 Engine 350HP
- Allison TRV3200 Electronic Six Speed Transmission
- Front 295/75R22.5 Radial Tires, 16 Ply
- Rear 295/75R22.5 Radial Tires, 14 Ply
- Accuride Polished Aluminum Wheels with Center Caps
- Airliner Rear Air Suspension
- Air Brakes with 4 Wheel ABS
- Jacobs C-Brake, Two-Stage with Dash Switch
- Dual 50 Gallon Aluminum Fuel Tanks, Total of 100 Gallon Capacity; 6 Gallon DEF Tank
- Air Ride Driver and Passenger Seat Pedestals with Swivels
- Power Windows and Door Locks
- Power/Heated Remote Control Mirrors
- Tilt & Telescoping Steering Wheel
- Premium Freightliner Heat/Sound Insulation
- Carpeted Floor Mats

## Appliances & Utilities

- 18 cu. ft. Stainless Steel French Door Refer w/ Icemaker
- Recessed LP Sealed 3 Burner Stainless Steel Cooktop
- Stainless Steel Convection Microwave Oven
- 10 Gallon LP/110V Electric Water Heater
- 34,000 BTU LP Gas Furnace with Electronic Ignition
- (2) 15,000 BTU Low Profile Roof A/C with Heat Pumps & Chill Grill

## Popular Options

- Stackable Washer/Dryer
- 60" x 74" Queen Size Bed with iRelax Memory Foam Mattress
- Table with Credenza and Free Standing Dinette Chairs
- Pair of DVD Monitors (40VBH Model Only)
- Dometic 13 cu. ft. LP/110V Refrigerator with Icemaker
- Power Retract Water Hose Reel
- Exterior Quick Disconnect LP Line (For Gas Grill) with Locking Door
- Armstrong Luxe Plank Flooring in Bedroom IPO of Standard Carpeting
- Theatre Seating IPO Standard Sofa Not Available 40VRB
- 88" Straight Sofa IPO L-Shaped Sofa 40VRB
- Shaw Satellite (Canadian Only)

# EXTERIOR PAINT OPTIONS



MERLOT



SANDCASTLE



ONYX

# PERFORMANCE-DESIGNED RV'S FOR WORK, PLAY OR BOTH.



## ▶ ABOUT REV GROUP

REV Group connects and protects communities with vehicles that have long served the bus, emergency, recreation and specialty markets. Together, REV Group and its 29 vehicle brands provide unmatched service, selection and support to passengers around the clock and around the world.

**Renegade**  
RV

Address: 52216 SR 15, Bristol IN 46507  
Phone: 888.522.1126 • RenegadeRV.com

Features and options may vary from depictions without notice

DESIGNED FOR <sup>YOUR</sup> LIFE

YOUR RENEGADE DEALER: